



## Solomons Court, London, N12

Finchleys are pleased to offer this this one double bedroom ground floor flat located in a gated development with allocated parking is positioned in this well maintained modern block.

The property which is neutrally decorated and superbly presented throughout is well located to provide easy access to the local amenities and transport links of East, West & North Finchley High Roads including West & East Finchley Tube stations and the A406

RENT INCLUDES WATER RATES

**£1,300**  
Per Calendar  
Month

1  1  1  



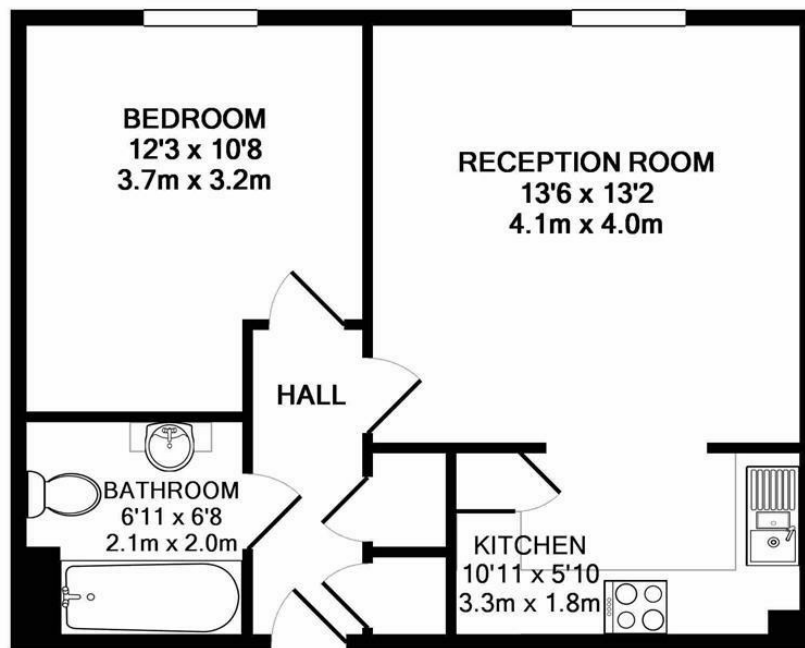
**FINCHLEYS  
ESTATES**

CLIENT FOCUSED. RESULTS DRIVEN.









GROUND FLOOR



SOLOMONS COURT N12  
TOTAL APPROX. FLOOR AREA 476 SQ.FT. (44.3 SQ.M.)  
Measurements are approximate. Not to scale. Illustrative purposes only



11 STATION ROAD  
FINCHLEY  
LONDON  
N3 2SB  
02083461180